



Via Dell'Industria , 22  
41018 S.Cesario s.P. (MO)

Tel +39 059 92 13 06

Fax +39 059 92 13 14

[info@cfsystem.it](mailto:info@cfsystem.it)

[info@nastri-trasportatori.net](mailto:info@nastri-trasportatori.net)

## **EDILVEYOR ASSEMBLY MANUAL**

## Mounting

Normally the Edilveyor conveyor belt is shipped completely assembled, but at the request of the customer and for special needs we can send the machine dismantled in its main components and packed on pallets

The material looks like in photo



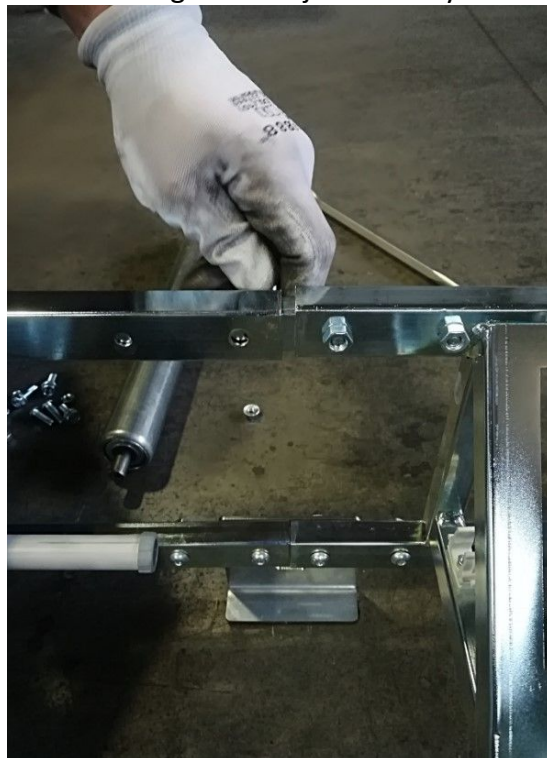
1 – Unpack the material and place it on a smooth, flat surface



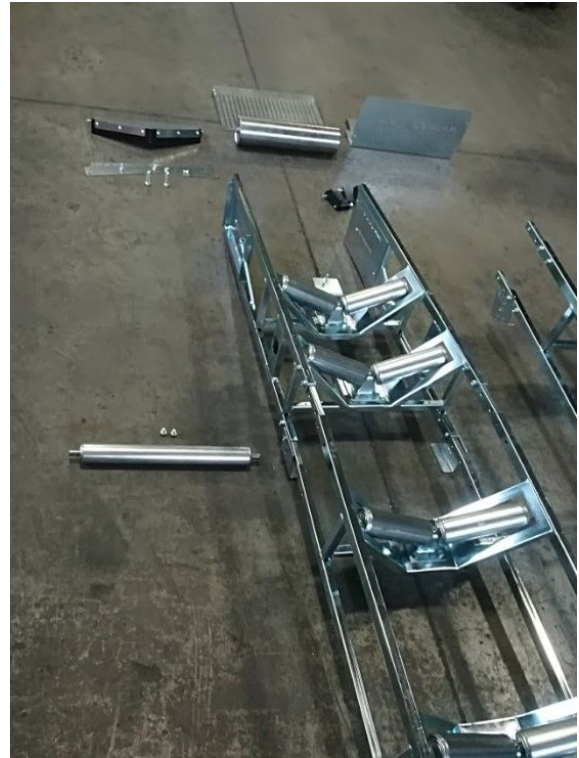
2 – Mount the intermediate frame with the control frame,  
first remove the return roller from the support bracket



3 – Tighten the joints firmly



4 – Take the tension frame and disassemble the tension cylinder, the tension plates, the scraper and the return roller



5 – Mount the intermediate frame with the tension frame and tighten the joints firmly

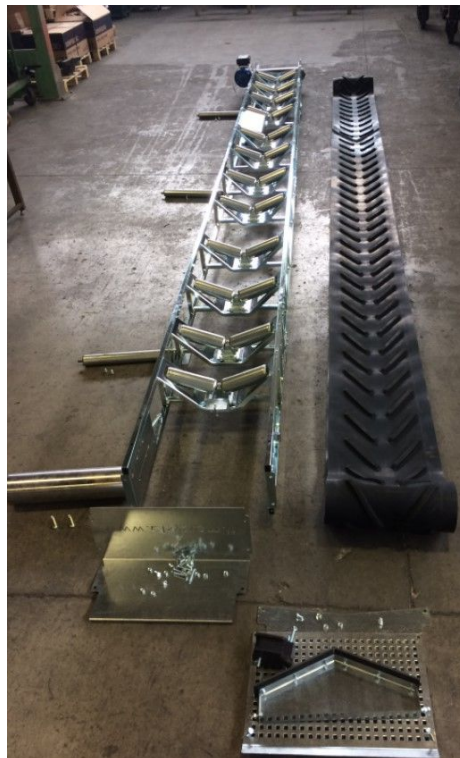




Now the machine is mounted and looks like in photo:



6 – Take the rubber belt and unroll it on the floor next to the machine



7 – Insert the rubber belt on the tension and then on the control



8 – Refit the tension cylinder, the return rollers and the tension plates.



For instructions on how to do the mounting see the video on our website :  
<http://www.nastri-trasportatori.net/en.html#montaggionastrocantiere>